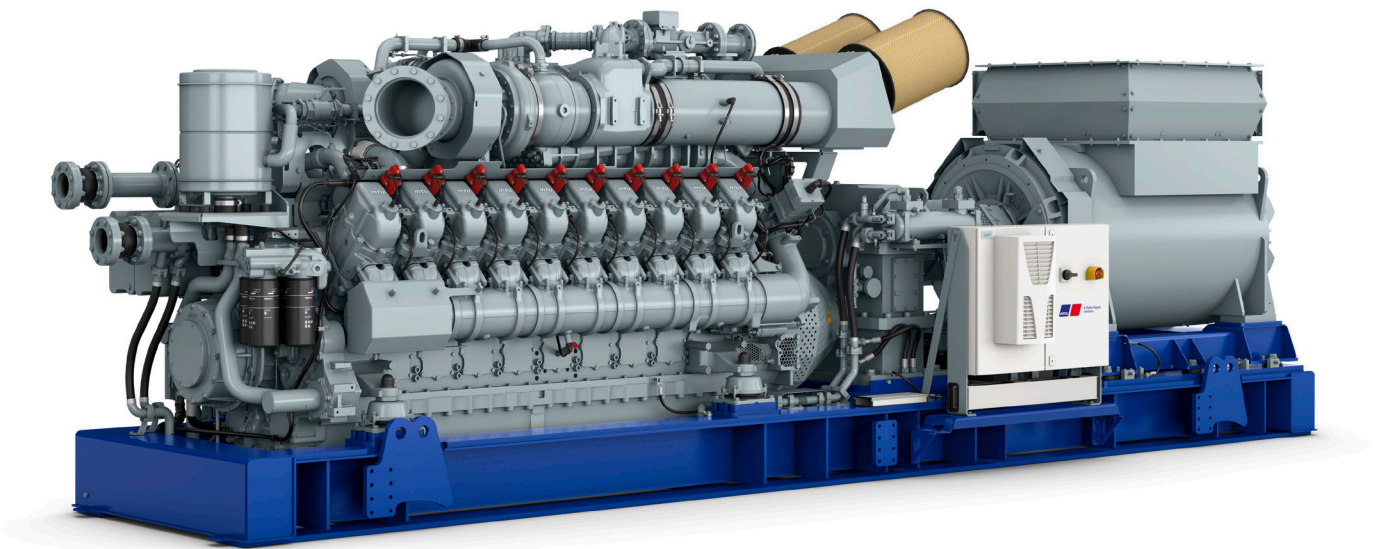




mtu 20V4000T24

GAS POWERPACK

2.6 MW / 60 Hz / Mobile EPA Tier 2



System Description

- With an **mtu** 20V Series 4000 gas engine at its core, the **mtu** Gas PowerPack is a natural gas-powered mobile solution optimized for maximum performance and lower emissions. State-of-the-art technology provides the highest efficiency on the market for mobile applications, resulting in a reliable, powerful, cost-effective solution that meets EPA Tier 2 Spark-Ignition certification.
- Lean-burn technology, a state-of-the-art electronic ignition system featuring individual timing and automatic energy regulation, knock control and a rapid-response mixture/load governor ensure safe, economical operation and optimum power harnessing.
- Operators can take advantage of low-cost and abundant natural gas to reduce operating costs.

Benefits

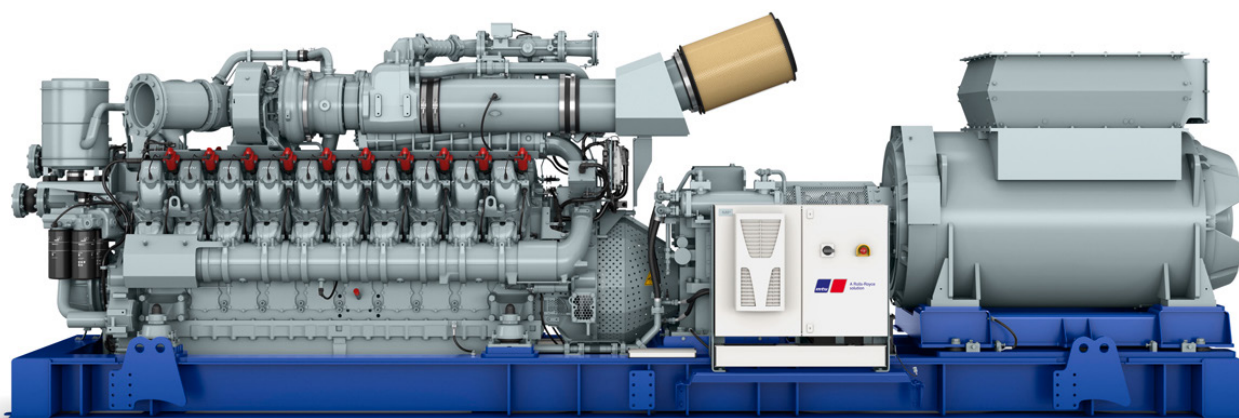
- Efficiencies of up to 42%, delivering a significant improvement in fuel/energy utilization even at high temperatures.
- TBO intervals of up to 48,000 hours and high running capacity mean reduced lifecycle costs.
- Designed for maximum performance with highest power density in its class, delivering continuous power at 2.6 MW.
- A perfect fit for wide range of mobile power applications, with fast ramp-up capability—from idle to full load in 48 seconds.
- Modular control system design provides flexibility to create hybrid configurations, allowing customers to tailor their operational needs based on the load requirements of a specific site.
- Fewer units are needed to achieve the same performance as a conventional diesel-powered site, resulting in improved efficiency and simplicity.
- Future-ready for use with new technologies and fuels such as hydrogen.

Specifications

mtu Gas PowerPack	
Bore/stroke	170/210 mm (6.7/8.3 in)
Rated speed	1,500 rpm @ 60 Hz
Mean piston speed	10.5 m/s (34.45 ft/sec)
Length	7,100 mm (280 in)
Width	2,030 mm (80 in)
Height	2,540 mm (100 in)
Dry weight	24,950 kg (55,000 lb)

Standard Features

- Mobile EPA Tier 2 Spark Ignition certification
- Global product support
- Five-year, 6,000-hour system warranty
- **mtu** 20V 4000 T24 gas engine
- Lean-burn combustion
- Two-stage mixture cooling
- Exhaust turbocharging
- Two cooling system circuits
- Electrical starter
- Resilient engine mounting
- Operation at up to 2,000 m at 13.8 kV
- High load acceptance
- Idle to full load in well under 50 seconds
- Designed for continuous duty
- 48,000 hour TBO
- LCC 50% below comparable diesel engine



TO VIEW OUR OIL & GAS SOLUTIONS, SCAN THIS CODE



Stay posted with more powerful information
and follow mtusolutions under:



Rolls-Royce Group
www.mtu-solutions.com

info@ps.rolls-royce.com
Tel.: +1 248 560 88 88 (North and Latin America)
Tel.: +65 6860 9669 (Asia/Pacific)
Tel.: +49 7541 90-77 777 (Europe, Middle East, Africa)
Or visit www.mtu-solutions.com

The Rolls-Royce name, Rolls-Royce Badge and Rolls-Royce Monogram logos are registered trade marks of Rolls-Royce plc